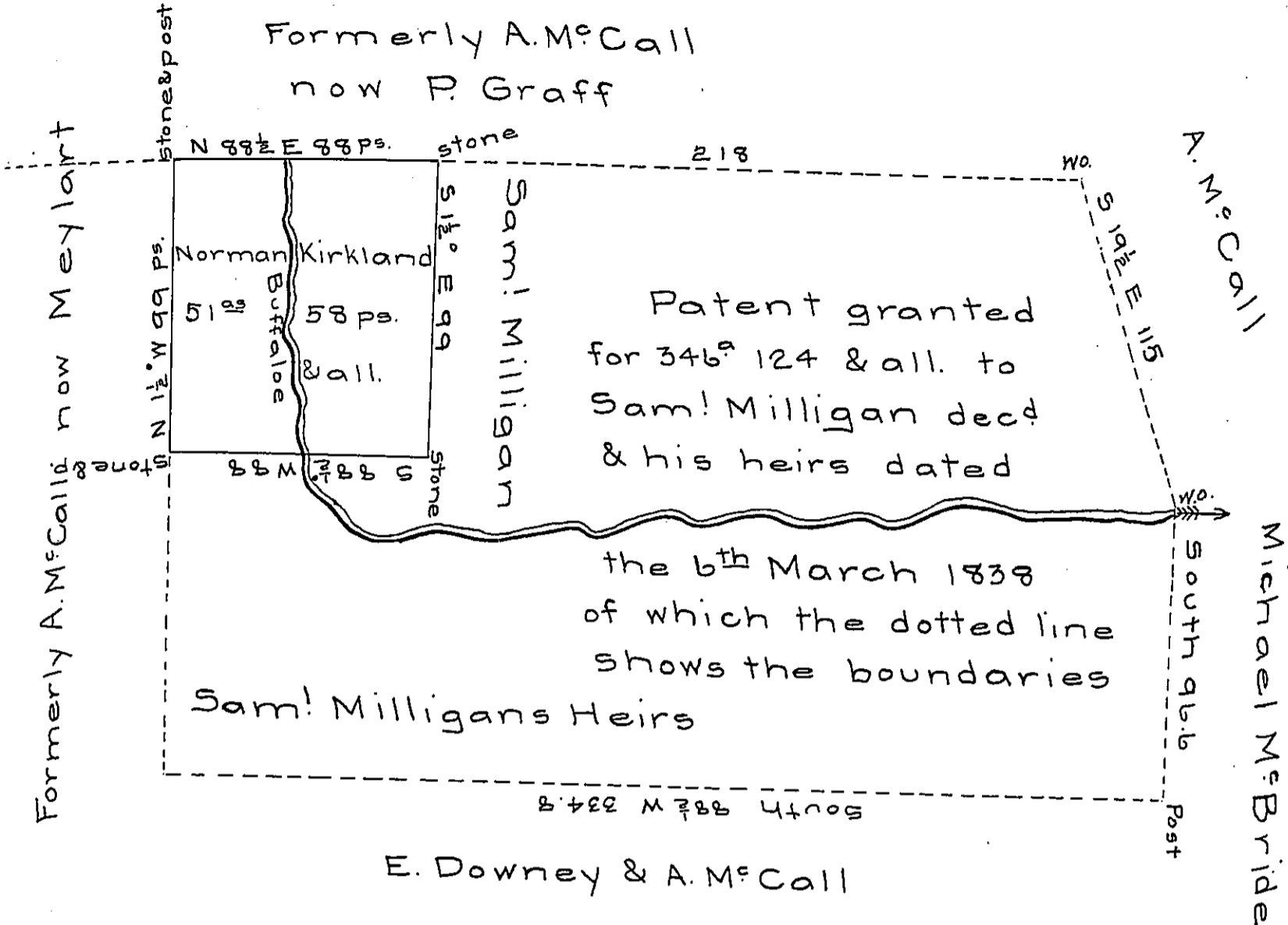


FORM No. 1.



The above is a draft of a lot of land situate in Clearfield township Butler County, containing fifty one acres and fifty eight perches with the usual allowance being part of a larger tract of land settled and improved by Sam! Milligan and for which a patent was granted to the said Sam! Milligan and his heirs bearing date the 6<sup>th</sup> day of March A.D. 1838 for 346<sup>1/2</sup> & 124 ps. & all. Surveyed on the 16<sup>th</sup> day of June A.D. 1854 for Norman Kirkland by virtue of his Treasurer's Deed.

To J. P. Brawley Esq.  
Surveyor Genl  
of Penna

Wm Purviance  
County Surveyor

IN TESTIMONY that the above is a copy of the original remaining on file in the Department of Internal Affairs of Pennsylvania, made conformably to an Act of Assembly approved the 16th day of February, 1833, I have hereunto set my Hand and caused the Seal of said Department to be affixed at Harrisburg, this seventh day of May 1906.

*Isaac R. Purviance*  
Secretary of Internal Affairs.